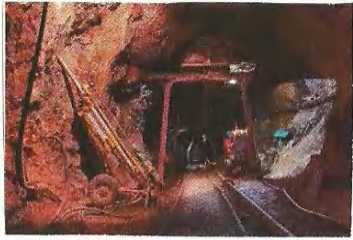


Ways to reduce this kind of mining?

- Reduce the consumption of minerals. People can reduce the consumer goods they use or the mineral content in the manufacturing processes can be reduced. For example, instead of building more vehicles, more could be relied on for public transportation.



- The use of recycled materials instead of the extracted materials
- Responsible consumption
- Boost to solar energy
- Sustainable construction

My piece of advice

I believe that this type of mining should be maintained but with certain limits, for example limits on the amount of minerals that can be extracted from a mine and mine performance could also be reduced by other means of obtaining raw materials and energy



Sources:

- Wikipedia
- Lousada council
- My note book
- Mineral information

San

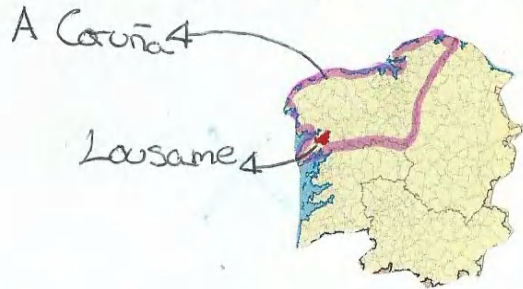
Finx

Mine



Where is located the mine?

The mines of San Flix are a mining operation located in the parish of Vilacova in the municipality of Lousame



When did the mine started to work?

A British man called Sir Thomas Winter Burbury arrived to Noia in 1880 and after doing some investigations of the ground he asked to build the mines, in 1890 they are donated to Sir Henry Winter Burbury that continues doing investigations and in this same year appears like proprietor of his Phenicia dealership.

In the 20th century, the mines where more successful because of need and hunger

What minerals and rocks are extracted?

Wolframio

It is a rare metal in the Earth's crust, it's in the form of oxide and salts in certain minerals. It is steel gray, very hard and dense, has the highest melting point of all the metals

Uses:

Mobile Phone



Lamp



Tin

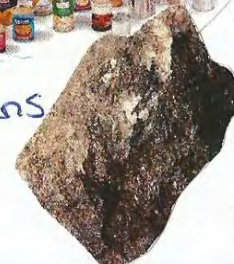
It is a silver metal, malleable that oxidizes easily, at room temperature, changing colour to a more opaque gray, and its resistant to corrosion. It is used in many alloys.

Uses:

Welding roll



Cans



Pros and cons of mining

Pros:

- Creates jobs directly and indirectly
- Generates money for the state
- Generates development of the infrastructures of towns
- Aid for economic growth



Cons:

- Destruction of flora and fauna
- Generates social conflicts
- Generates pollution
- Destruction of ecosystems
- Creates health problems

